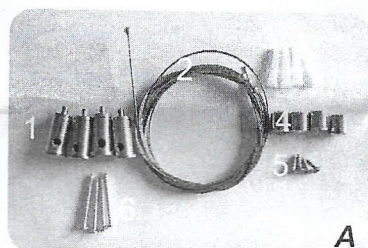
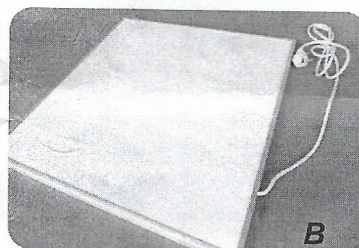


Step1: Get all accessories ready as Pic. A.

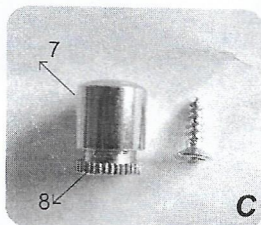


A

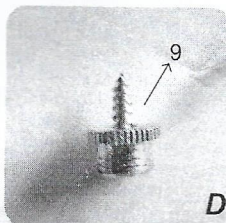


B

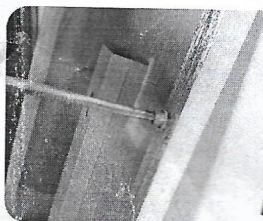
Step2: Four holes prepared in each frame. Split part (No. 4) as Pic. C.
Fix part (No. 9) into four prepared holes as Pic. E.



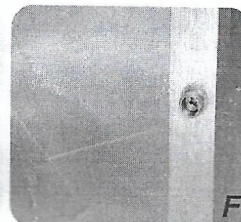
C



D

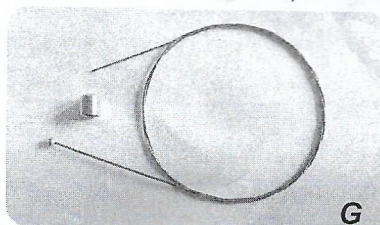


E

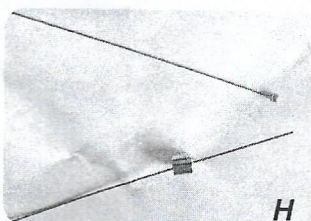


F

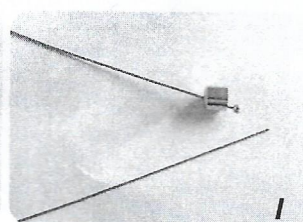
Step3: Insert the line into part (No. 7) as Pic. I.



G

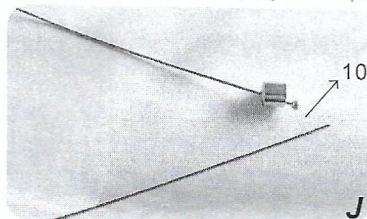


H

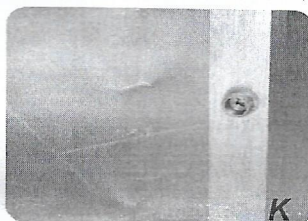


I

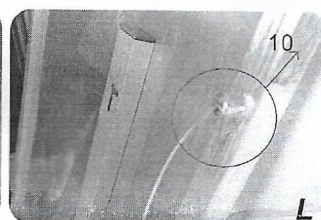
Step4: Fix part (No. 10) onto the frame as Pic. L.



J



K

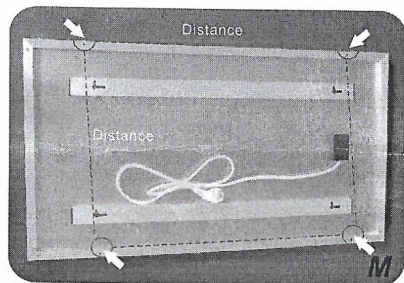


L

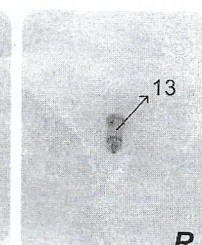
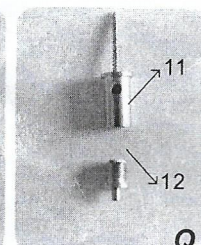
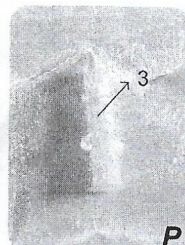
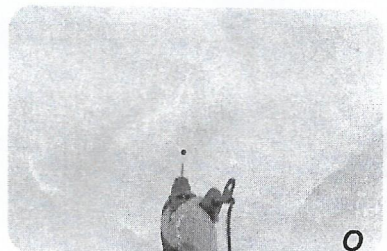
Ceiling Mounted Installation

Part 2

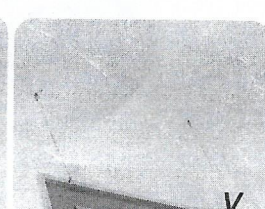
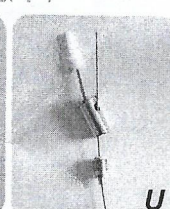
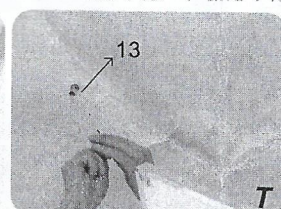
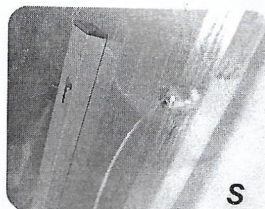
Step5: Confirm the distance between four prepared holes on the frame as Pic. M.
Mark on the ceiling as Pic. N.



Step6: Make four holes on the marked points as Pic. O. Put the Plastic screw (No. 3) into the wall. Put the screw (No. 6) into the part (No. 1). Then fix the part (No. 11) on the wall. Pic. R.



Step7: Connect the end of the line (No. 10) with part (No. 13) as Pic. T and Pic. V.



Step8: Adjust the distance between panel and ceiling as you wish.

